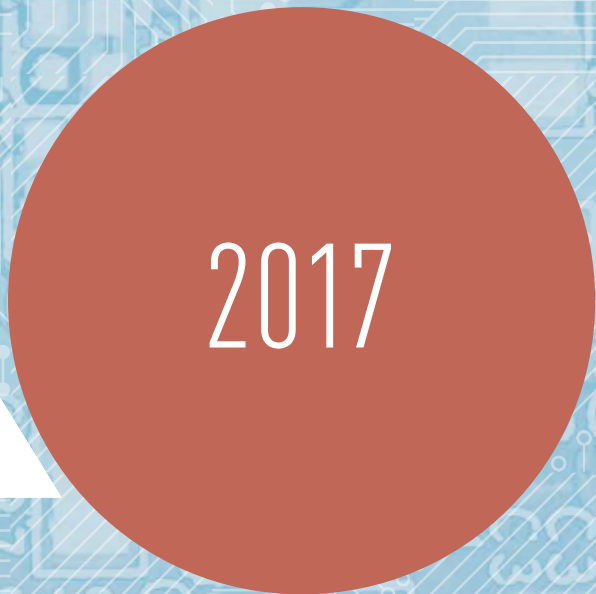
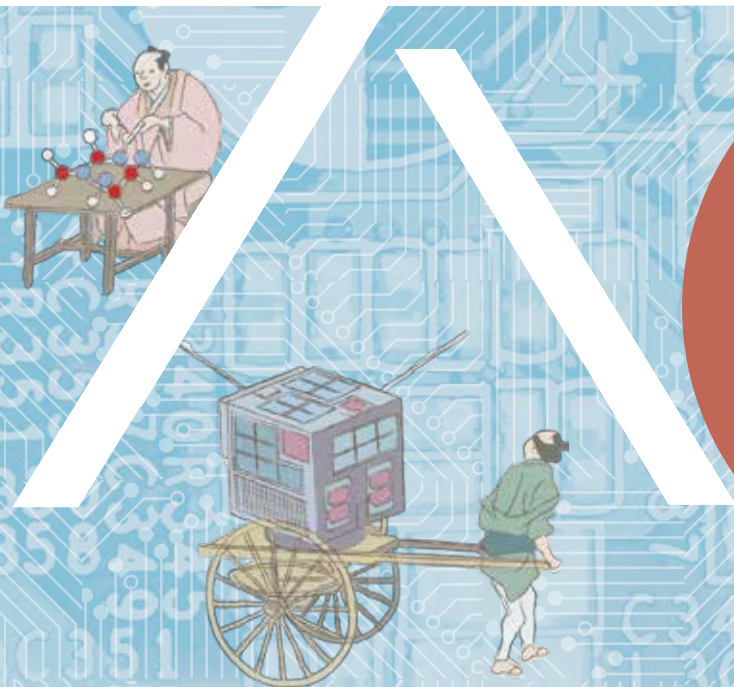
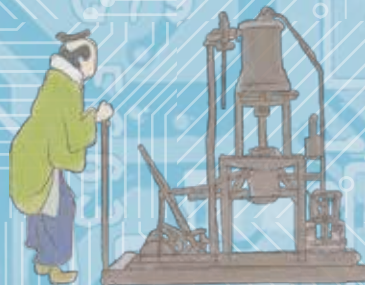
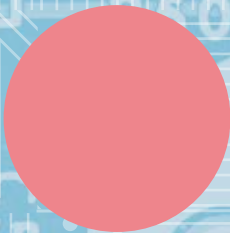
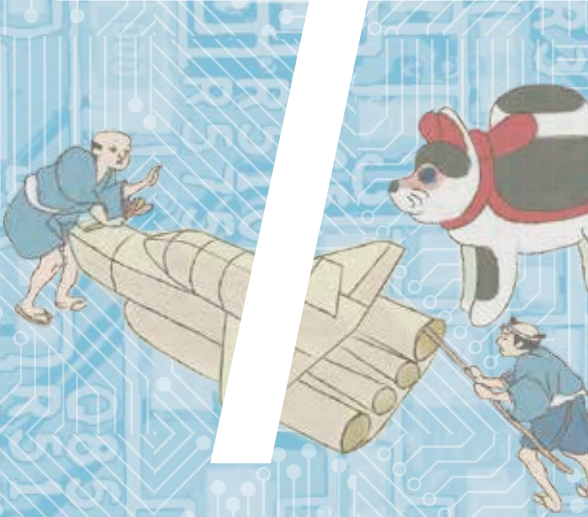


Kyushu Institute of Technology



2017



Kyutech

Kyushu Institute of Technology

Contents

- 2 Message from the President
- 3 History / Mission and Vision
- 4 Kyutech at a Glance
- 5 Strength and Achievements
- 7 Where We Are
- 9 Management and Administration
- 10 Faculty and Staff
- 11 Enrollment
- 13 Education and Research Organizations
- 14 Strategic Center for Education and Research
- 15 School of Engineering
 - Department of Mechanical and Control Engineering
 - Department of Civil and Architectural Engineering
 - Department of Electrical and Electronic Engineering
 - Department of Applied Chemistry
 - Department of Materials Science and Engineering
 - Department of Integrated System Engineering
- 17 Graduate School of Engineering
 - Department of Mechanical and Control Engineering
 - Department of Civil and Architectural Engineering
 - Department of Electrical and Electronic Engineering
 - Department of Materials Science
 - Department of Applied Science for Integrated System Engineering
 - Department of Engineering
 - International Course
- 19 School of Computer Science and Systems Engineering
 - Department of Artificial Intelligence
 - Department of Computer Science and Electronics
 - Department of Systems Design and Informatics
 - Department of Mechanical Information Science and Technology
 - Department of Bioscience and Bioinformatics
- 21 Graduate School of Computer Science and Systems Engineering
 - Department of Advanced Informatics
 - Department of Interdisciplinary Informatics
 - Department of Creative Informatics
 - Department of Computer Science and Systems Engineering
 - International Course
- 23 Graduate School of Life Science and Systems Engineering
 - Department of Biological Functions Engineering
 - Department of Human Intelligence Systems
 - Department of Life Science and Systems Engineering
 - International Course
- 25 Kyutech Course Guide
- 27 Globalization at Kyutech
 - MSSC (Malaysia Super Satellite Campus)
 - Study Abroad & Work Abroad
 - International Student Enrollment
 - Our Partners

Message from the President



President
Kyushu Institute of Technology
Yuji Oie

Extending the Frontiers of Engineering: Educating the Next Generation of Talented Engineers

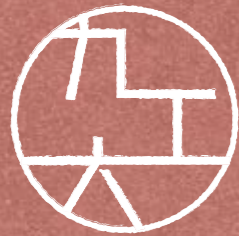
Meiji College of Technology, a precursor to Kyushu Institute of Technology (Kyutech), was founded and funded by Mr. Keiichiro Yasukawa, a noted businessman of the time. In the more than 100 years since its inauguration, Kyutech has produced over 60,000 talented engineers by practicing its founding principle of "instilling a deep knowledge of science and engineering in high caliber students." The university has contributed to knowledge creation that will lead to academic progress, enhanced competitiveness in industry and regional development by making the most of its education and research capabilities.

Progress in science and technology in recent years is remarkable, filled with discoveries and inventions leading to the creation of innumerable technologies. These achievements have spread through society and become part of people's lives at an accelerating pace. For example, the Internet used to be just an experimental low-speed communication line in 1969 but has now become the network which connects people all over the world. This is one way that science and technology are closely linked with people's lives, and the importance of its role is increasing.

In this context, Kyutech has been producing the engineers who provide solutions to the complicated challenges in our diverse society. Kyutech focuses on not only the education of knowledge and skills, but also notices the essential qualities for global engineers: acceptance of diverse cultures, communication skills, self-learning skills, problem finding and solution skills, and engineering design skills. To cultivate these qualities, Kyutech offers a variety of study programs and the best learning environment.

In addition, we believe university is a place for knowledge creation which unlocks the future. As knowledge creation, research activities have two aspects of value; one is for the development of academic studies and the other is for the development of society. Kyutech has established 11 strategic research centers for the study of environment, energy, space, LSI, networks, robots and more in order to ensure a diverse array of research activities, and to actively promote industrial-academia collaborations.

Kyutech always seeks opportunities for information exchange, dialogue and collaboration with the public to introduce our various education and research activities. We aim to build up relationships and networks, to enhance the quality of education and research, and to realize a campus which encourages people to join in the pursuit of knowledge.



History

- 1907 The Meiji College of Technology was founded as a private institution
- 1909 The Meiji College of Technology started
- 1921 The Meiji College of Technology became a 4-year course national institution
- 1949 The Meiji College of Technology became Kyushu Institute of Technology
- 1965 The Graduate School of Computer and Systems Engineering was established
- 1986 The Faculty of Computer Science and Systems Engineering was established
- 1988 A doctoral program was launched in the Graduate School of Engineering
- 1991 The Graduate School of Computer Science and Systems Engineering was established
- 1993 A doctoral program was launched in the Graduate School of Computer Science and Systems Engineering
- 2000 The Graduate School of Life Science and Systems Engineering was established
- 2004 Kyushu Institute of Technology was incorporated as a National University Corporation
- 2009 The school's 100th anniversary
- 2013 MSSC (Malaysia Super Satellite Campus) was established
- 2014 Reorganization of 3 graduate schools

Mission and Vision

Kyushu Institute of Technology (Kyutech) was originally founded as a private institution called the Meiji College of Technology in 1907.

Mr. Keiichiro Yasukawa, the owner of a successful mining business, contributed a big amount of his private fortune to establish the College with the aspiration for strengthening Japan's industry. His enthusiasm motivated Dr. Kenjiro Yamakawa who was the first physicist in Japan and the President of Tokyo Imperial University, to cooperate with him in drawing the grand design of the College.

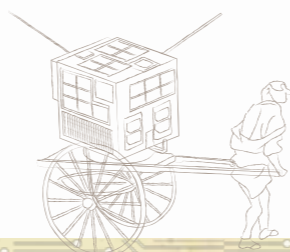
Dr. Yamakawa's vision for the College has been succeeded by Kyutech today; educating gentlemen with excellent knowledge and skills in technology, which means developing engineers not only with technological expertise but also with uprightness and high moral sense. With this vision, Kyutech produced talented engineers who contribute to industrial development in Japan for more than 100 years of its history, and it continues to be our mission for the future.



Keiichiro Yasukawa
(1849-1934)



Dr. Kenjiro Yamakawa
(1854-1931)



Kyutech at a Glance



3

Tobata campus
Izuka campus
Wakamatsu campus
Campuses



5,653

4,131 undergraduate students
1,240 master's students
282 doctoral students

The number of students



275

International students from

34 countries and regions

34



431

Faculty members

198

Administrative staff



About

60%

of undergraduate students go to graduate school



As of May 2017

Strength and Achievements

Revenue from joint research
with companies / industries

Ranked No. 2

among small-mid sized 44 universities (300~500 researchers)

Number of Patents
per researcher

Ranked No. 23 in Japan

All the departments of
our undergraduate schools
have been
accredited by

JABEE

JABEE: Japan Accreditation Board for Engineering Education, the organization that accredits engineering education programs. JABEE holds the status of full signatory of the Washington Accord, which is an international agreement among bodies responsible for accrediting engineering degree. Other signatories include the United States, Canada, and the United Kingdom.

Times Higher Education Japan University Rankings 2017

Ranked No. 28 **Ranked No. 19**

among all Japanese Universities

among all Japanese National Universities

**Employment
Rate of Graduates**

99.7%

as of March 2016

Among these successful graduates, nearly 50% joined the "Listed Companies" such as Hitachi, Mitsubishi, OBIC, Suzuki, Panasonic, Honda, Kawasaki, Nissan, Toyota, Mazda, Fujitsu, Canon, NEC, NTT, etc.

**Strong alliance with
Kyutech Alumni**

Kyutech Alumni named "Meisen-kai" is one of the largest alumni in Japan with more than 37,000 members, 49 branches, 11 committees.

A number of our alumni are Chairman, CEO, President, and Executives of leading companies in Japan such as, Toyota Auto Body, Torey, Isuzu, Yaskawa Electric, Asahi-Kasei, Sumitomo Metal Mining, Nissan, Mitsui Chemical, Oji Holdings, Y-E Data, Mitsui Aluminium, ROHM Semiconductor (Thailand), and more.

Number of **venture companies**
established by university research outcomes

Ranked No. 10 in Japan

43

venture companies
from Kyutech

Joint Research Projects
with companies / industries

180

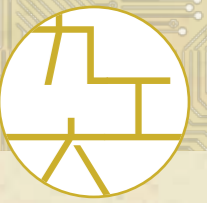
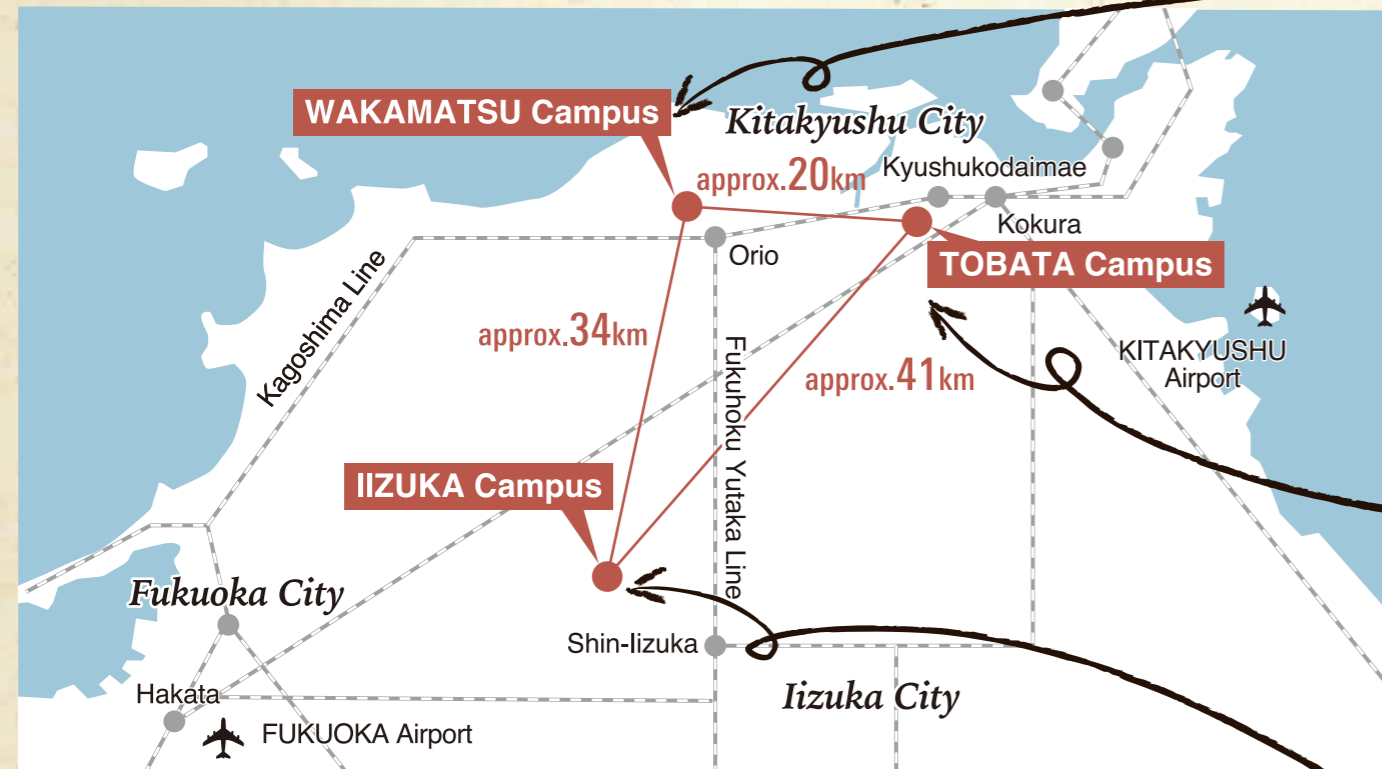
projects
in 2015

Ranked No. 29

among all 777 National and Private universities

Where We Are

Kyushu Institute of Technology (Kyutech) has 3 campuses and they are all located in Fukuoka prefecture, northern part of Kyushu island of Japan. Each campus has its characteristics and strong ties with the local area.



Wakamatsu campus



- Graduate School of Life Science and Systems Engineering

Developing engineers with high skills to apply superb functions of living organisms

Wakamatsu campus is located in Kitakyushu Science and Research Park (KSRP), which was established as a core academic research center in Asia. It consists of 4 universities including Kyutech and multiple research institutions and R&D companies, and aims to create new industry with the knowledge and technology developed in those institutions to revitalize Kitakyushu as an industrial city. The 4 universities share their visions in education and research and have active collaborations such as joint research, credit transfer, and joint graduate schools. And a good number of venture businesses were born in KSRP by utilizing research seeds of these universities.

Tobata campus



- School of Engineering
- Graduate School of Engineering

Developing engineers with high technical skills and a mind for manufacturing

Tobata campus is Kyutech's main campus since it was first founded as a private technological school in the Tobata area of Kitakyushu city. Kitakyushu city led Japan's rapid economic growth by its heavy industries and became one of the four major industrial zones in Japan. But in return for the prosperity, Kitakyushu gained a bad reputation as a polluted city. After overcoming the serious air and water pollution, Kitakyushu city is now attracting international attention for its successful restoration of the environment, and the technology for ecology and sustainable society.

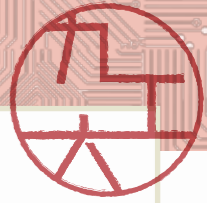
Iizuka campus



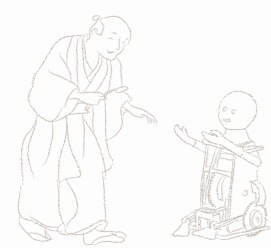
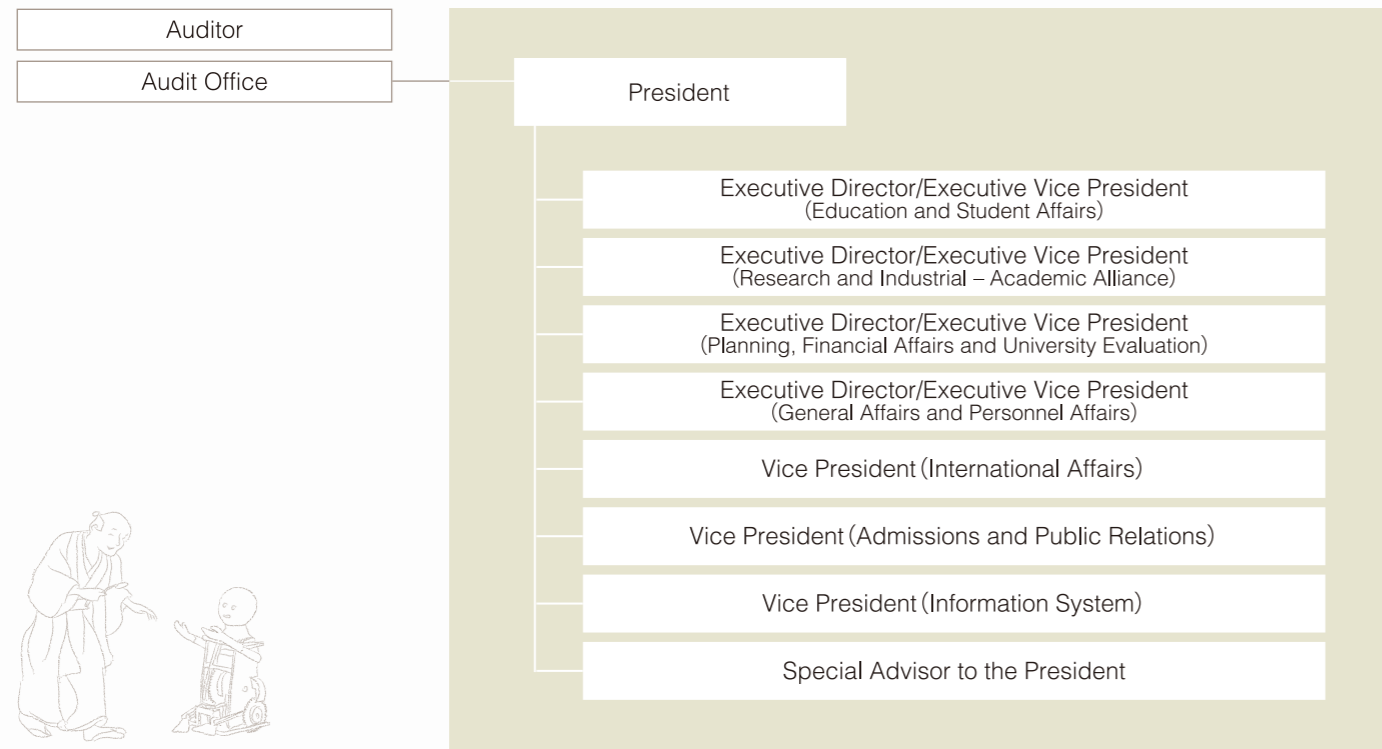
- School of Computer Science and Systems Engineering
- Graduate School of Computer Science and Systems Engineering

Developing leading IT experts with global competency

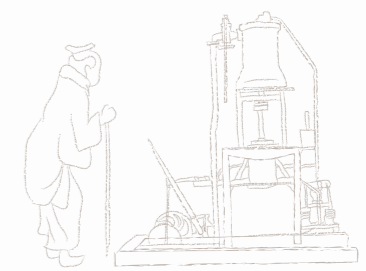
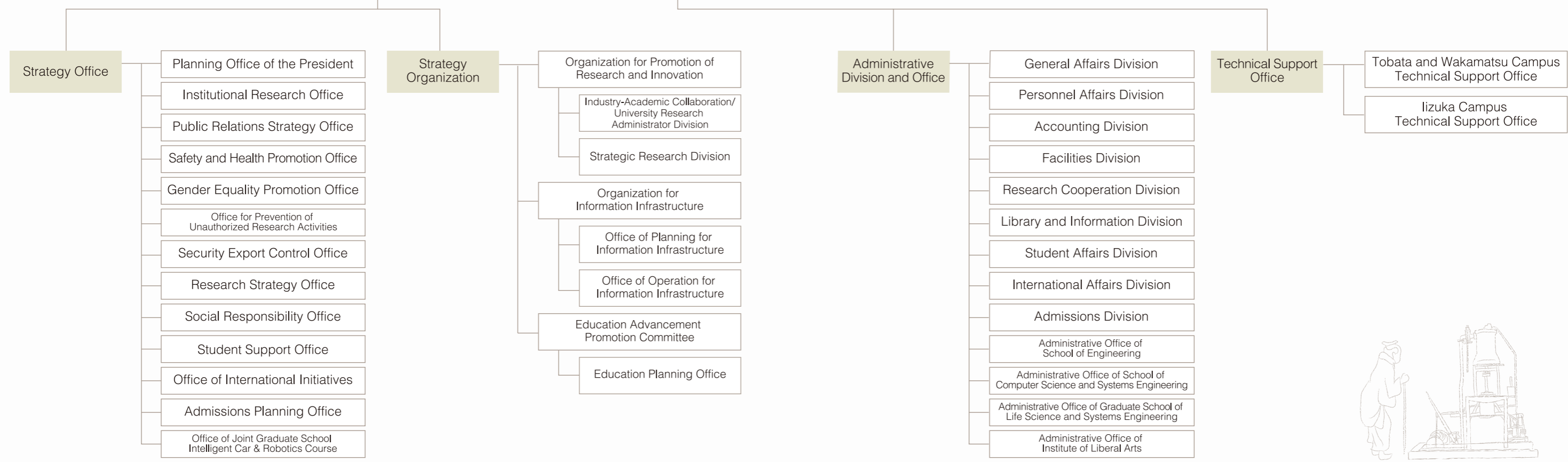
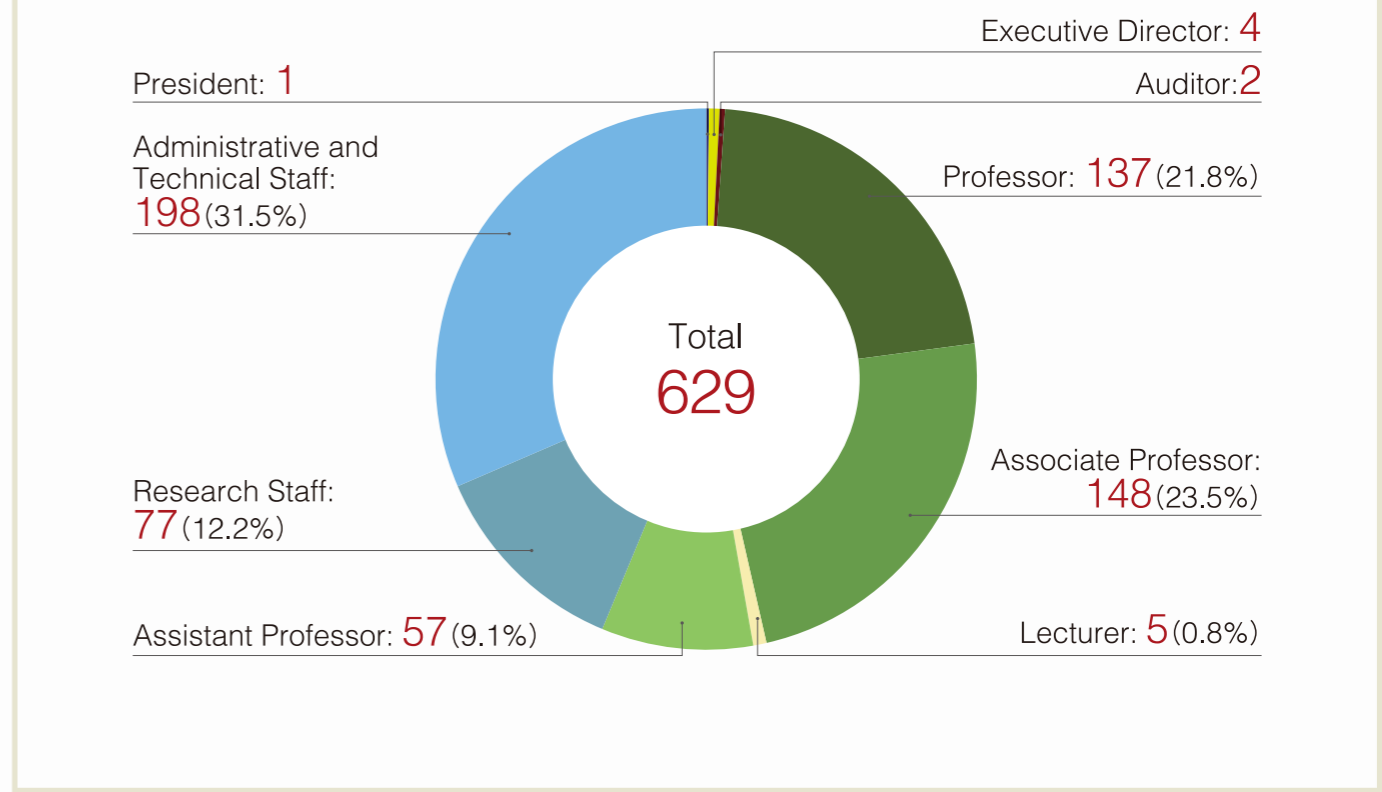
The Iizuka area used to enjoy the prosperity brought by its coal mining industry, which supported the government-owned steel plant established in 1901 in Kitakyushu city and helped with the industrialization of Japan. But because of the energy transition from the coal to oil, the coal mines were closed and many people left Iizuka in 1970's. To get back on its feet, Iizuka city started to invite education and research institutions to reboot the area. Kyutech's School of Computer Science and Systems Engineering was established in Iizuka in 1986, and gradually other research institutions and businesses in the IT industry gathered in this area. In 2002, Iizuka city set up "e-ZUKA Tri-Valley Plan" to support venture businesses together with the Fukuoka prefectural government and it yielded IT venture businesses by industry-academia-government collaboration.

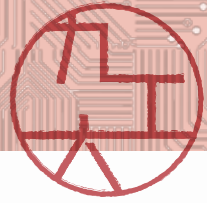


Management and Administration



Faculty and Staff





Enrollment (As of May 2017)

Total Enrollment

	Undergraduates	Graduate Students	Total
Number of Students	4,131	1,522	5,653
Number of International Students *Included in total number	23 (0.6%)	208 (13.7%)	231 (4.1%)

School of Engineering

	Freshman		Sophomore		Junior		Senior		Total			
	International Students		International Students		International Students		International Students		International Students			
Department of Mechanical and Control Engineering		151		157		157		158		623		6
Department of Civil and Architectural Engineering		83		85		110		78		356		1
Department of Electrical and Electronic Engineering		134	1	149		142		134		559		1
Department of Applied Chemistry		70	2	80		79		70		299		2
Department of Materials Science and Engineering		61		67		62		68		258		
Department of Integrated System Engineering		53		53		50		54		210		
Total		552	3	591	3	600	3	562	1	2,305		10

Graduate School of Engineering

	Master's Program						Doctoral Program							
	First Year		Second Year		Total		First Year		Second Year		Third Year		Total	
	International Students		International Students		International Students		International Students		International Students		International Students		International Students	
Department of Mechanical and Control Engineering		83	5	88	8	171	13					6		6
Department of Civil and Architectural Engineering		35	8	28	3	63	11					1		1
Department of Electrical and Electronic Engineering		69	3	62	1	131	4					3		3
Department of Materials Science		59	4	58	2	117	6					1		1
Department of Applied Science for Integrated System Engineering		44	10	50	11	94	21					5	1	5
Department of Engineering								29	17	28	15	22	7	79
Total		290	30	286	25	576	55	29	17	28	15	38	8	95

School of Computer Science and Systems Engineering

	Freshman		Sophomore		Junior		Senior		Total		
	International Students		International Students		International Students		International Students		International Students		
Department of Artificial Intelligence		88	1	107		101		78	1	374	2
Department of Computer Science and Electronics		94	1	106		110	2	83	2	393	5
Department of Systems Design and Informatics		83	1	89		97	1	92		361	2
Department of Mechanical Information Science and Technology		78	1	90		94		103	1	365	2
Department of Bioscience and Bioinformatics		78	1	82		88		85	1	333	2
Total		421	5	474		490	3	441	5	1,826	13

Graduate School of Computer Science and Systems Engineering

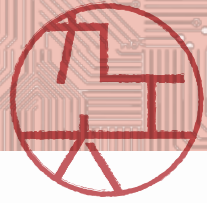
	Master's Program						Doctoral Program							
	First Year		Second Year		Total		First Year		Second Year		Third Year		Total	
	International Students		International Students		International Students		International Students		International Students		International Students		International Students	
Department of Information Science*												1		1
Department of Information Systems*												1		1
Department of Advanced Informatics	60	4	62	3	122	7								
Department of Interdisciplinary Informatics	91	3	89	5	180	8								
Department of Creative Informatics	46	3	45	2	91	5						3	2	3
Department of Computer Science and Systems Engineering							14	6	15	6	12	5	41	17
Total	197	10	196	10	393	20	14	6	15	6	17	7	46	19

* The name of department before reorganization of 2014

Graduate School of Life Science and Systems Engineering

	Master's Program						Doctoral Program							
	First Year		Second Year		Total		First Year		Second Year		Third Year		Total	
	International Students		International Students		International Students		International Students		International Students		International Students		International Students	
Department of Biological Functions and Engineering*												12		12
Department of Brain Science and Engineering*												12	1	12
Department of Biological Functions Engineering	73	5	64	3	137	8								
Department of Human Intelligence Systems	60	9	74	7	134	16								
Department of Life Science and Systems Engineering							38	18	27	13	52	18	117	49
Total	133	14	138	10	271	24	38	18	27	13	76	19	141	50

* The name of department before reorganization of 2014



Education and Research Organizations

Undergraduate School

School of Engineering

- Department of Mechanical and Control Engineering
- Department of Civil and Architectural Engineering
- Department of Electrical and Electronic Engineering
- Department of Applied Chemistry
- Department of Materials Science and Engineering
- Department of Integrated System Engineering
- Career Center

School of Computer Science and Systems Engineering

- Department of Artificial Intelligence
- Department of Computer Science and Electronics
- Department of Systems Design and Informatics
- Department of Mechanical Information Science and Technology
- Department of Bioscience and Bioinformatics
- Career Center

Undergraduate Schools will be reorganized in April 2018.
(See P.16 and 20 for details)

Faculty

Faculty of Engineering

- Department of Mechanical and Control Engineering
- Department of Civil and Architectural Engineering
- Department of Electrical and Electronic Engineering
- Department of Materials Science
- Department of Basic Sciences
- Department of Applied Science for Integrated System Engineering

Faculty of Computer Science and Systems Engineering

- Department of Artificial Intelligence
- Department of Computer Science and Electronics
- Department of Systems Design and Informatics
- Department of Mechanical Information Science and Technology
- Department of Bioscience and Bioinformatics
- Department of Creative Informatics

Institute of Liberal Arts

- Department of Humanities and Social Sciences
- Department of Foreign Languages

Graduate School

Graduate School of Engineering

- Department of Mechanical and Control Engineering
- Department of Civil and Architectural Engineering
- Department of Electrical and Electronic Engineering
- Department of Materials Science
- Department of Applied Science for Integrated System Engineering
- Department of Engineering

Graduate School of Computer Science and Systems Engineering

- Department of Advanced Informatics
- Department of Interdisciplinary Informatics
- Department of Creative Informatics
- Department of Computer Science and Systems Engineering

Graduate School of Life Science and Systems Engineering(Including Faculty)

- Department of Biological Functions Engineering
- Department of Human Intelligence Systems
- Department of Life Science and Systems Engineering
- Career Center

Education and Research Center

- University Health Center
- Information Science Center
- Center for Microelectronic Systems
- Center for Instrumental Analysis
- Learning & Teaching Center
- Laboratory of Spacecraft Environment Interaction Engineering
- Network Design Research Center
- Advanced Mold and Die Technology Center
- Research Center for Bio-microsensing Technology
- Science Education Center
- Eco-Town Collaborative R&D Center for the Environment and Recycling
- Research Center for Advanced Eco-fitting Technology
- Frontier Research Academy for Young Researchers
- Biomedical Informatics R&D Center
- Next Generation Power Electronics Research Center
- Center for Socio-Robotic Synthesis
- Dependable Integrated Systems Research Center

Strategic Center for Education and Research



Dentistry-Engineering Cooperative Education and Research Center

Kyutech and Kyushu Dental University collaboratively established the center to promote interdisciplinary fusion between dentistry and engineering. It aims at the world highest level of research results related to dental care, and the development of talented technical experts for related industries and researchers.

Advanced Mold and Die Technology Center

The center is engaged in die and mold engineer education for students and workers in cooperation with industry, and contributes to local die and mold industries by conducting research and development of new technology based on Industry-academia-government collaboration.

Laboratory of Spacecraft Environment Interaction Engineering

Space systems such as satellites must endure the extremely harsh space environment made of space plasma, ultraviolet rays, atomic oxygen, vacuum, etc. The lab carries out research and development of endurance technology for such environment that is necessary to achieve next-generation space utilization such as high-precision positioning, material creation, sight-seeing, and lunar base.

Network Design Research Center

Information network has now become indispensable for our society. The mission of the center is to design next generation human-centric networks which provide comfortable communication and support people's daily life. To achieve this, the center conducts researches on both fundamental and applied technology, from wired and wireless network, to distributed system and human interface.

Science Education Center

The center provides various kinds of science education in collaboration with local community. For example, it opens "Junior Science School" for elementary school students which offers classes of origami (paper folding) and science in daily life, and coordinates the trial course which high school students can experience university life.

Research Center for Bio-microsensing Technology

Bio-microsensing is a technology to promptly measure various biological materials which indicate health conditions. The center develops fundamental technology and instruments as a tool for self-management of health. It's also relates to Dentistry-Engineering Cooperative Education and Research Center established in collaboration with Kyushu Dental University's Oral Bio Research Center.

Research Center for Advanced Eco-fitting Technology

The center defines "eco-fitting technology" as the technology which improves conventional technology by energy reduction, environmental load reduction, and time and labor saving. Based on its activities and research results, the center aims to enhance and add values to industrial technology, and promotes education and research on eco-fitting.

Eco-Town Collaborative R&D Center for the Environment and Recycling

The center is mainly aiming at effective utilization of urban biomass and realization of advanced recycling society. It is engaged in public demonstration and introduction of the technology newly developed by Kyutech and its collaborative partners, in order to diffuse and adopt the technology in the society.

Frontier Research Academy for Young Researchers

Based on the government funded project, Frontier Research Academy for Young Researchers was established to promote a tenure track system, aiming at nurturing young and talented research leaders, stabilizing the system, and developing a world-class research base.

Next Generation Power Electronics Research Center

The center promotes research on upcoming power electronics technology such as power semiconductor devices, from the view point of "Green electronics" which contributes to realize the low-carbon society by energy conservation, advanced utilization of electricity, and practical usage of natural energy.

Biomedical Informatics R&D Center

The center aims to build a highest level education and research base of biomedical informatics in Asia, and also the base of medical-engineering and industry-academia-government collaboration, by active research and development based on computer science and systems engineering. It also contributes to human health and welfare by medical innovation and educating global engineers as innovators.

Center for Socio-Robotic Synthesis

The center focuses on researches of special robot available under the ultimate environment, medical nursing care robot, mechatronics and robot education. And it aims to utilize the research results in society, propose new possibilities by developing next generation robots and robot markets, and contribute to the community by educating talented engineers.

Dependable Integrated Systems Research Center

The mission of the center is to create highly reliable and high-quality next generation integrated systems through the research on basic and applied technology, and to realize the safe and secure information society. And it contributes to strengthen academic and industrial competitiveness by developing advanced technology, networking for international research collaboration etc.



Department of Mechanical and Control Engineering

Create future machines with high controllability
The department focuses on two engineering fields; mechanical engineering to produce and operate machines which enrich our lives by elucidating natural phenomena, and control engineering to enable intelligent smooth operation of machines by combining measuring, controlling and information devices.

- Mechanical Engineering Course
- Space Engineering Course
- Control Engineering Course



Department of Civil and Architectural Engineering

Future urban design for solid, beautiful and enriched city

The department consists of two courses. Architecture Course focuses on creating functional and beautiful architecture and urban space design. Civil and Environmental Engineering Course aims to create safe and enriched city and community environment.

- Architecture Course
- Civil and Environmental Engineering Course



Department of Materials Science and Engineering

Pursue materials to accelerate development of science and technology

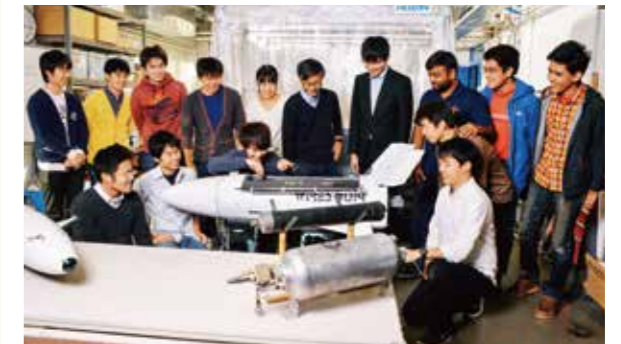
Dealing with materials such as steel, alloy, semiconductor, ceramic and composite materials, students learn how to elucidate the structure and properties of materials in nanoscale, design functions of new materials, and develop efficient production method of safe products.



Department of Integrated System Engineering

Integrate various fields of engineering for advanced industry

The department provides education in multiple fields of engineering, mainly mechanical engineering and electrical and electronics engineering, to develop high-skilled engineers and researchers for advanced industries such as next generation vehicle, robotics, mechatronics, and aerospace industry.



Department of Electrical and Electronic Engineering

Electrical and electronic systems to support infrastructure of society and industry

Electrical and electronic engineering is essential to modern industry and social life. The department focuses on next-generation energy, electronic devices and circuits, and electronic system technology which contributes to society.

- Electrical Engineering Course
- Electronic Engineering Course



Department of Applied Chemistry

Explore the world at the atomic and molecular scale

The department provides curricula in chemistry to sustain industrial production and manufacturing. Students acquire knowledge of science and technology to create new functional substances and apply them to commercial products in the fields of the environment, energy, information and biotechnology.



Reorganization of School of Engineering in April 2018

Until the academic year of 2017

Department	Course
Department of Mechanical and Control Engineering	Mechanical Engineering Course
	Space Engineering Course
	Control Engineering Course
Department of Civil and Architectural Engineering	Architecture Course
	Civil and Environmental Engineering Course
Department of Electrical and Electronic Engineering	Electrical Engineering Course
	Electronic Engineering Course
Department of Applied Chemistry	
Department of Materials Science and Engineering	
Department of Integrated System Engineering	

From the academic year of 2018

Department	Course
Department of Mechanical and Control Engineering	Mechanical Engineering Course
	Control Engineering Course
Department of Civil Engineering and Architecture	Architecture Course
	Civil Engineering Course
Department of Electrical and Electronic Engineering	Electrical Engineering Course
	Electronic Engineering Course
Department of Applied Chemistry	Applied Chemistry Course
Department of Materials Science and Engineering	Materials Science and Engineering Course
Department of Space Systems Engineering	Mechanical and Space Systems Engineering Course
	Electrical and Space Systems Engineering Course



Master's Program

Department of Mechanical and Control Engineering

The graduate program of this department provides a comprehensive and interdisciplinary education through advanced research and professional practice in the field of mechanical engineering, control engineering, artificial intelligence and space engineering.



Department of Civil and Architectural Engineering

This department aims to train students to be experts with wide vision, advanced expertise, research capability and technological development skills in the field of architecture, regional environment design, and urban redevelopment design toward creating and sustaining the society with happiness and reassurance.



Department of Applied Science for Integrated System Engineering

The department aims to foster advanced professional engineers with highly specialized knowledge and abilities to work in advanced interdisciplinary field and capable of leading a new era and responding to the demands of society. The program of the department is designed to pursue integrated research and educational activities in collaboration with other departments.



Doctoral Program

Department of Engineering

This doctoral program offers opportunities to research in multiple fields with a set of courses for expertise, communicative skills and leadership management. And it focuses not only on fundamental and up-to-date knowledge in related engineering fields for students to envision its impact on society, but also on the mastery of several engineering fields which contributes to the creation of innovative technologies.



Department of Electrical and Electronic Engineering

The department aims to contribute to advanced information society especially from the viewpoint of environment friendliness and energy efficiency. Its curricula include courses on electrical energy, solid state physics, electronic devices, electronic systems, sensing systems, network systems and signal processing systems.



Department of Materials Science

The department covers the design and synthesis of new substances and materials having new functions, analysis of material/substance structures and properties, and elucidation of their functional expression mechanisms. It also works on development of systems using value-added substances, and development of production processes that cater to the needs of high-tech industries.



International Course



Space Engineering International Course

Space Engineering International Course (SEIC) is designed for aspiring students and engineers with passion for space and satellites, aiming at nurturing both Japanese and international students into global engineers with cross-cultural competency and skills in space engineering. In SEIC you will engage in project-based learning in interdisciplinary, multicultural teams with access to top-notch research laboratories and satellite development and testing centers which is very unique to Kyutech. And you will gain the skills necessary to carry out the full cycle of satellite design, test, operation, systems engineering, and project management.

International Material Course (Department of Materials Science)

Department of Materials Science is one of the graduate courses of Graduate School of Engineering and it's open for international students as International Material Course. The department covers the design and synthesis of new substances and materials having new functions, analysis of material/substance structures and properties, and elucidation of their functional expression mechanisms. It also works on development of systems using value-added substances, and development of production processes that cater to the needs of high-tech industries. For international students, all the lectures are provided in English.



Department of Artificial Intelligence

New information technology for human-computer collaboration

The department provides education programs in computer science and artificial intelligence on both basic theory and application/practice, and aims to develop engineers who establish new information technology for human-computer collaboration through various media such as language, sound and vision.



Department of Computer Science and Electronics

To become an elite specialist of hardware and software

The department conducts advanced education and research in three study fields: Electronics Engineering dealing with semiconductors and electronic circuits, Computer Engineering for the fundamentals and application technology of computer, and Information and Communication Engineering for the Internet and mobile phone and other telecommunication technology.



Department of Bioscience and Bioinformatics

Research on life as superb information systems

Nowadays advanced information technology is indispensable for research and production in medical, pharmaceutical and biotechnological field. The department provides education both in information science/engineering and life science/engineering to explore the world of living organisms and molecules as superb information systems that nature created.



Iizuka MILAiS



Learning AGORA



Department of Systems Design and Informatics

Aims to design totally innovative information systems

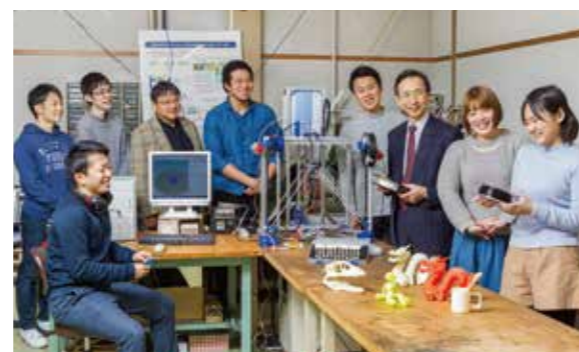
To build advanced systems used in modern society such as robots and automobiles systems, engineers need to acquire not only various technical skills but also the ability to combine and apply multiple components of technology. The department aims to produce engineers with such systems design ability.



Department of Mechanical Information Science and Technology

Micro level designing in the area of robotics

Mechanical Information Engineering is a fusion of Mechanical Engineering and Information Engineering, aiming to realize the society where people live in harmony with machines. In this department, students learn the basis of natural science, Information Engineering and Mechanical Engineering and conduct research on robot technology, microtechnology, and 3D design technology.



Reorganization of School of Computer Science and Systems Engineering in April 2018

Until the academic year of 2017

Department
Department of Artificial Intelligence
Department of Computer Science and Electronics
Department of Systems Design and Informatics
Department of Mechanical Information Science and Technology
Department of Bioscience and Bioinformatics

From the academic year of 2018

Department	Course
Department of Artificial Intelligence	Data Science Course
	Artificial Intelligence Course
	Media Informatics Course
Department of Computer Science and Networks	Software Design Course
	Network Engineering Course
	Computer Engineering Course
Department of Intelligent and Control Systems	Robotics Course
	Systems and Control Course
	Mechanical Science and Technology Course
Department of Physics and Information Engineering	Physics and Electronics Course
	Biophysics Course
Department of Bioscience and Bioinformatics	Biomolecular Engineering Course
	Biomedical Informatics Course



Master's Program

Department of Advanced Informatics

The department consists of two divisions: the Division of Artificial Intelligence to study computer science and information system development; and the division of Computer Science and Electronics to study electronics, computers, LSI, and information and communication networks. The department aims to foster engineers with ability to lead advanced development to enhance the systems and component technologies for the basis of information science/engineering including core computer science and ICT technology.



Department of Interdisciplinary Informatics

The department consists of three divisions: the Division of Systems Design and Informatics which provides education and research for systems creation by applying ICT technology, the Division of Mechanical Information Science and Technology for education and research for digital engineering and robotics, and the Division of Bioscience and Bioinformatics which conducts the development of information systems related to biotechnology and research on bioinformatics.



Department of Creative Informatics

The department is designed to produce engineers who can find problems in industry occurred from the changes of society, acquire knowledge to organize the process of practical solutions and realization by cutting-edge information technology, promote industry-academia collaborations in response to the needs of society, and have an attitude to accelerate the society with information technology.



Doctoral Program

Department of Computer Science and Systems Engineering

This doctoral program consists of six divisions of three departments in the master's program. And it is designed to produce engineers with the abilities and attitudes as follows: to create advanced technology useful for the development of information technology, to build innovative information systems to cope with various problems by combining different areas of science and technologies, to lead the future of IT technology and become a global leader who can even reform the structure of society.

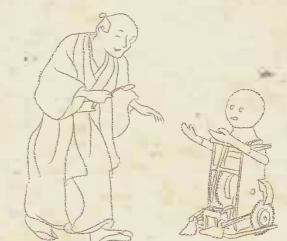


International Course



LSI and Applied Computing Course

LSI and Applied Computing Course is a newly opened international course in Graduate School of Computer Science and Systems Engineering. This course, which consists of two practical modules, covers the key technologies of system and LSI design including applied computing. The LSI design module provides knowledge of design for integrated circuits and dependable systems. The applied computing and system design module provides applications of computing methods with advanced systems and the methodology of system design.





Master's Program

Department of Biological Functions Engineering

The research and education in this department focuses on engineeringly reproducing and utilizing the structures and the functions of material and energy conversion which nature and living organisms have. And in this department, researchers in material and bioscience fields collaborate mainly in the research subjects of environment and energy, and aim to contribute to the solution for social issues such as global environment and human health.

- Division of Green Electronics
- Division of Biological Mechanics
- Division of Environmentally Conscious Chemistry and Bioengineering
- Division of Physiological and Biochemical Adaptation
- Division of Green Technology
- Division of Proactive Maintenance

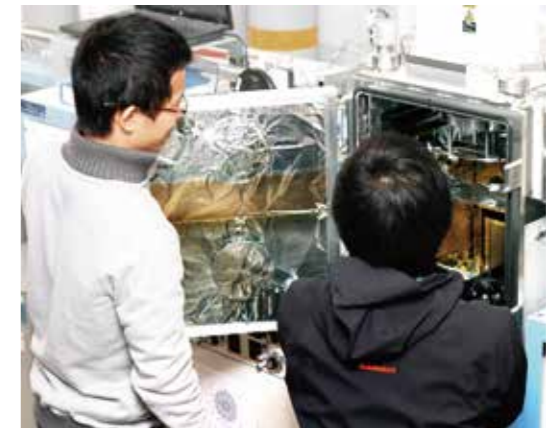


Doctoral Program

Department of Life Science and Systems Engineering

In this course, the two departments of the master's course are integrated into one department. The course provides cross-disciplinary and global oriented education and research to develop engineers as follows.

- ▶ Engineers and researchers with capability and knowledge to elucidate the living organisms' superior structures and functions for resource and energy saving, environmental adaptation and affinity with human being, and reproduce and apply the structures and functions through engineering approach.
- ▶ Engineers who can play a dominant role as global leader by offering solutions to various issues confronting the modern society and contribute to the sustainable harmony of the society with nature.
- ▶ Professionals who keep up with the latest trends in research and technology and strive to produce innovative research results.



Department of Human Intelligence Systems

The department aims to engineeringly reproduce the functional principles of human intelligence into intelligent systems and intelligent information processing, and contribute to industry and provide solutions to social issues. The research and education in this department covers advanced development of mechanical systems and devices, such as intelligent autonomous robots, intelligent information system development and artificial intelligence algorithms designs that incorporate the principles of human reasoning, and scientific analysis of social activities and human intelligence by using mathematical modelling, brain science and cognitive science.

- Division of Human Intelligence and Machines
- Division of Intelligence Systems and Emergent Design
- Division of Human Interaction and Brain Functions
- Division of Human Behavioral Sciences
- Division of Human Technology



International Course

Global AAR Course

AAR is the abbreviation of Advanced Assistive Robotics, and Global AAR Course is focused on advanced robotics emphasizing the aspect of assistive technology. In this course, you will acquire knowledge and skills for design and implementation of intelligent systems that provides solutions to industry and medical welfare, in multidisciplinary subjects such as integrated circuits, control, sensing, nanosystems, computer systems, machine learning, cognitive/behavioral science, neuroscience, and brain-computer interface.

You will learn and conduct research through collaborative work with Japanese students.



Undergraduate School

1st Year 2nd Year 3rd Year 4th Year



Master's Program in Graduate School

1st Year of Master's Program 2nd Year of Master's Program



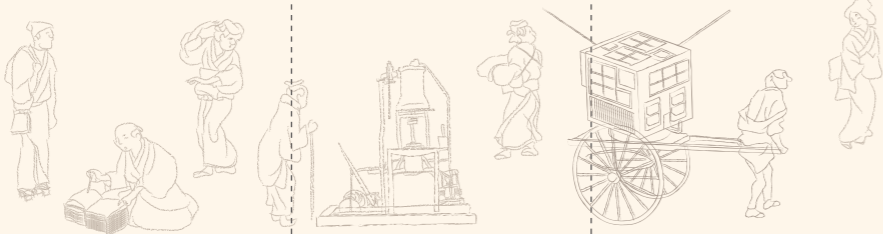
Doctoral Program in Graduate School

1st Year of Doctoral Program 2nd Year of Doctoral Program 3rd Year of Doctoral Program



School of Engineering

- Department of Mechanical and Control Engineering Mechanical Engineering Course
Space Engineering Course
Control Engineering Course
- Department of Civil and Architectural Engineering Architecture Course
Civil and Environmental Engineering Course
- Department of Electrical and Electronic Engineering Electrical Engineering Course
Electronic Engineering Course
- Department of Applied Chemistry
- Department of Materials Science and Engineering
- Department of Integrated System Engineering



About **60%** of undergraduates go to graduate school

School of Computer Science and Systems Engineering

- Department of Artificial Intelligence
- Department of Computer Science and Electronics
- Department of Systems Design and Informatics
- Department of Mechanical Information Science and Technology
- Department of Bioscience and Bioinformatics

Graduate School of Engineering

- Department of Mechanical and Control Engineering
- Department of Civil and Architectural Engineering
- Department of Electrical and Electronic Engineering
- Department of Materials Science
- Department of Applied Science for Integrated System Engineering

Graduate School of Life Science and Systems Engineering

- Department of Biological Functions Engineering
- Department of Human Intelligence Systems
- Department of Life Science and Systems Engineering

Graduate School of Computer Science and Systems Engineering

- Department of Advanced Informatics
- Department of Interdisciplinary Informatics
- Department of Creative Informatics
- Department of Computer Science and Systems Engineering

Start your career after graduation/completion



MSSC (Malaysia Super Satellite Campus)

Kyutech operates MSSC on the campus of our partner Universiti Putra Malaysia as the very first overseas satellite office for education and research established by Japanese national university. MSSC works as a hub for Kyutech's projects for global engineer education, international joint research, and faculty and staff development.



4 missions of MSSC

- Global education for students
 - Student study abroad program
 - Work abroad internship program in Malaysia
 - Dual degree program with UPM (Doctoral course)
- Recruiting talented foreign students
- Accelerating international research activities
 - Joint research with UPM
 - Annual international symposium with UPM
- Faculty and staff development for globalization

International Student Enrollment

275 international students from 34 countries and regions

(As of May 2017)

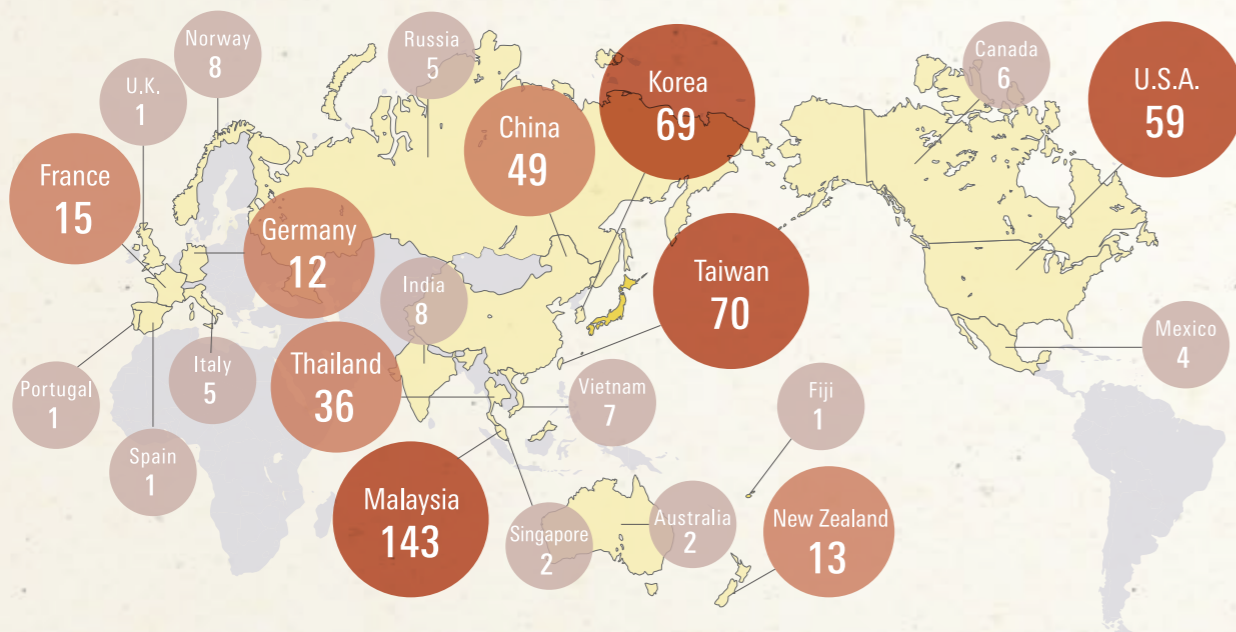
	Asia										North, Central & South America			Europe		Middle East			Africa			Total													
	China	India	Korea	Malaysia	Indonesia	Thailand	Vietnam	Taiwan	Mongolia	Bangladesh	Philippines	Bhutan	Myanmar	Canada	Mexico	Costa Rica	Colombia	Brazil	Peru	France	Ukraine		Germany	Portugal	Palestine	Syria	Turkey	Afghanistan	Iran	Egypt	Nigeria	Chana	Algeria	Madagaskar	Morocco
Total	101	22	21	20	16	16	8	6	6	5	5	4	1	1	3	2	2	1	1	6	1	1	1	3	2	2	1	1	6	4	3	1	1	1	275
Undergraduates	10		4	6	1	1	1																												23
Master's Students	41	3	7	6	4	7	4		2	3	2	4				1		1	1	3				1	2	1			1	1	2		1	1	99
Doctoral Students	30	19	2	7	11	6	1	1	4	1	3		1	1	3	1	2			1	1		1	2		1	1	1	3	3	1	1			109
Non-degree seeking students	20		8	1		2	2	5		1										2		1												44	

Breakdown by Schools

School	Level	Countries/Regions																																		Total
		China	India	Korea	Malaysia	Indonesia	Thailand	Vietnam	Taiwan	Mongolia	Bangladesh	Philippines	Bhutan	Myanmar	Canada	Mexico	Costa Rica	Colombia	Brazil	Peru	France	Ukraine	Germany	Portugal	Palestine	Syria	Turkey	Afghanistan	Iran	Egypt	Nigeria	Chana	Algeria	Madagaskar	Morocco	
Graduate School of Engineering	Total	59	1	14	4	2	6	3	2	5	4	3	4	1		3	2	2		1	6	1	1		1	2			4	4	3	1		1	140	
	Undergraduates	5		3	1			1																												10
	Master's Students	26		2	1		4	2		1	3	1	4			1		1	3			1	1		1	1			1	2			1		55	
	Doctoral Students	11	1	1	2	2				4	2		1			3	1	2			1	1				1			2	3	1	1			40	
	Non-degree seeking students	17		8			2	2		1											2		1								2				35	
Graduate School of Computer Science and Systems Engineering	Total	20	2	4	8	10	6	2	4									1															1		59	
	Undergraduates	5		1	5	1	1																												13	
	Master's Students	8		3	3	3	1											1																1	20	
	Doctoral Students	5	2			6	4	1																								1		19		
	Non-degree seeking students	2						2	3																										7	
Graduate School of Life Science and Systems Engineering	Total	22	19	3	8	4	4	3		1	1	2		1									1	2	2		1	1	1					76		
	Master's Students	7	3	2	2	1	2	2		1	1														2						1			24		
	Doctoral Students	14	16	1	5	3	2	1				1	1		1								1	2			1	1						50		
	Non-degree seeking students	1			1																														2	

Study Abroad & Work Abroad

The number of students who joined student mobility program: **517** to 22 countries and regions (As of March 2017)



Our Partners

Number of Agreements (as of August 2017)

● Number of Partner Institutions: 118 (32 countries and regions)

● Number of Double Degree Program partners: 10

- Université de Lorraine (France)
- Yangzhou University (China)
- Xidian University (China)
- National Taiwan University of Science and Technology (Taiwan)
- Institut Supérieur de Mécanique de Paris (France)
- Univertisi Putra Malaysia (Malaysia)
- Chang-won National University (Korea)
- École des Mines de Saint-Étienne (France)
- King Mongkut's University of Technology North Bangkok (Thailand)
- King Mongkut's University of Technology Thonburi (Thailand)

 **NORWAY**
University College of Southeast Norway

 **POLAND**
Faculty of Physics, Astronomy and Informatics,
The Nicholas Copernicus University
Adam Mickiewicz University

 **U.K.**
Cranfield University
The University of Surrey

 **FRANCE**
Université de Lorraine
International Space University
École des Mines de Saint-Étienne
Institut Supérieur de l'Aéronautique et de
l'Espace (ISAE-SUPAERO)
Institut Supérieur de Mécanique de Paris
Graduate School ENSEIRB-MATMECA,
Bordeaux Institute of Technology
Université de Poitiers


 **GERMANY**
Fukultät für Maschinenbau, Technische
Universität Braunschweig
Fraunhofer Institute for Intelligent Analysis
and Information Systems
Clausthal University of Technology
Faculty of Computer Science, Electrical
Engineering, and Information Technology,
The University of Stuttgart

 **ITALY**
University of Salento
Faculty of Science and Technology,
Free University of Bolzano-Bozen
University of Turin

 **SPAIN**
Universitat Jaume I


 **PORTUGAL**
University of Porto

 **BELGIUM**
Ghent University

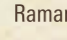
 **CZECH**
Faculty of Electrical Engineering and
Computer Science, Technical University of Ostrava

Faculty of Chemical Technology,
University of Chemistry and Technology Prague

 **SLOVAKIA**
Faculty of Electrical Engineering and Informatics,
Technical University of Kosice

 **TURKEY**
Faculty of Aeronautics and Astronautics,
Istanbul Technical University

 **BANGLADESH**
BRAC University
Independent University
University of Rajshahi
Indian Institute of Technology (BHU), Varanasi

 **INDIA**
Indian Institute of Technology Delhi
SRM University
Indian Institute of Technology (BHU), Varanasi
Raman Research Institute
Indian Institute of Technology Indore
Indian Institute of Technology Kanpur
Dronacharya College of Engineering
Manipal University

 **THAILAND**
Thammasat University
Sirindhorn International Institute of
Technology, Thammasat University
Faculty of Science, Mahidol University
Faculty of Science, Chulalongkorn University
King Mongkut's University of Technology
North Bangkok
Rajamangala University of Technology,
Phra-Nakhon
Kasetsart University
King Mongkut's University of Technology
Thonburi
King Mongkut's Institute of
Technology Ladkrabang
Faculty of Science, Khon Kaen University

 **VIET NAM**
FPT University
Hanoi University of Science and Technology
University of Science-HCMC
Center for Technology Development Assistance
and Services, Vietnam Academy of
Science and Technology
Institute of Biotechnology, Vietnam
Academy of Science and Technology
Vietnam National Satellite Center

 **MALAYSIA**
Universiti Putra Malaysia
Universiti Teknologi Malaysia
Universiti Kebangsaan Malaysia
Universiti Sains Malaysia
Universiti Teknologi MARA

 **TAIWAN**
National Taiwan University of Science and
Technology
College of Science, National Cheng Kung
University
College of Electrical Engineering and Computer
Science, National Cheng Kung University
National Taipei University of Technology
National Yang-Ming University
College of Engineering, National Taiwan University
College of Electrical Engineering and
Computer Science, National Taiwan University

 **RUSSIA**
Peter the Great Saint-Petersburg
Polytechnic University, Institute of Metallurgy,
Mechanical Engineering and Transport
Novosibirsk State University

 **CHINA**
University of Science and Technology Beijing
Shandong University
East China Jiaotong University
Henan University of Science and Technology
Yangzhou University
East China Normal University
Xidian University
Xi'an Jiaotong University
Department of Thermal Engineering, Tsinghua
University
China Agricultural University
Northeastern University
Center for Brain Science Research, Fudan
University
Dalian University of Technology
Qingdao University of Technology
China University of Petroleum-Beijing
Hefei University of Technology
Division of Biomedical Engineering of
Interdisciplinary Programs Office, the Hong Kong
University of Science and Technology
Changshu Institute of Technology
Institute of Urban Environment,
Chinese Academy of Sciences



 **MONGOLIA**
National University of Mongolia

 **KOREA**
Chang-won National University
Korea National University of Transportation
Pusan National University
Brain Research Center, Pohang University of
Science & Technology
School of Engineering, Pohang University of
Science and Technology
Hanbat National University
Sookmyung Women's University
Korea Electronics Technology Institute
The CK-1 Center, Yeungnam University
School of Science and Engineering of Chemical
Materials, Kumoh National Institute of
Technology
Korea Maritime and Ocean University

 **PHILIPPINES**
University of the Philippines Diliman
Ateneo de Manila University


 **SINGAPORE**
National Institute of Education (NIE)
of Nanyang Technological University

 **INDONESIA**
Institut Teknologi Bandung
Faculty of Industrial Technology, Universitas
Islam Indonesia
Faculty of Medicine,
University of Sumatera Utara
Hasanuddin University

 **AUSTRALIA**
University of Technology, Sydney
Australian National University


 **NEW ZEALAND**
Faculty of Creative Industries and Business,
Unitec Institute of Technology
Knowledge Engineering & Discovery Research
Institute, Auckland University of Technology

 **U.S.A.**
Clarkson University
The University of Texas at El Paso
California Polytechnic State University
The City College of New York
The University of Colorado at Boulder

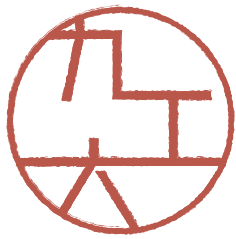
 **Mexico**
Department of Microbiology and Parasitology,
Faculty of Medicine, National Autonomous
University of Mexico

 **COSTA RICA**
Instituto Tecnológico de Costa Rica

 **NIGERIA**
Federal University of Technology, Akure

 **GHANA**
All Nations University College





Kyushu Institute of Technology
1-1 Sensui-cho, Tobata-ku, Kitakyushu, 804-8550 Japan
<http://www.kyutech.ac.jp/>
International Affairs Division
Phone : +81-93-884-3063 Fax : +81-93-884-3059
E-mail : kok-kouryu@jimu.kyutech.ac.jp

