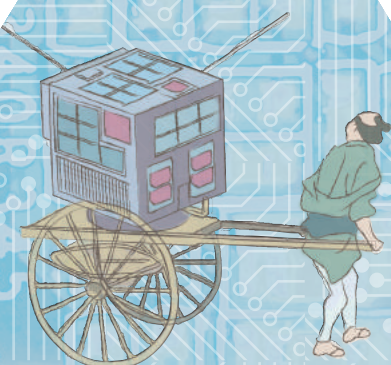
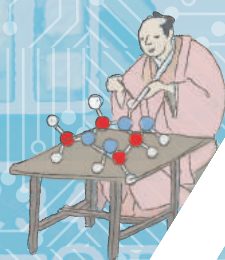
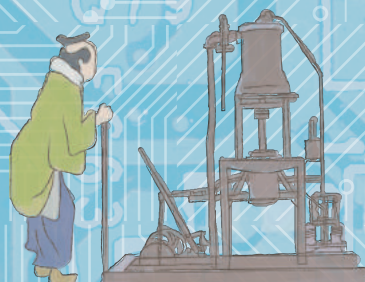
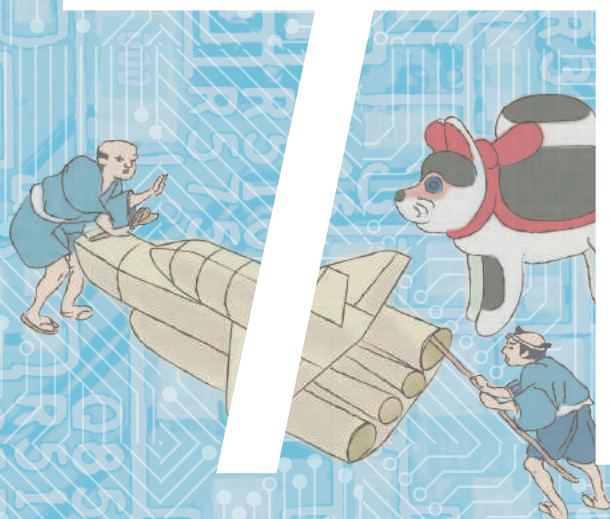
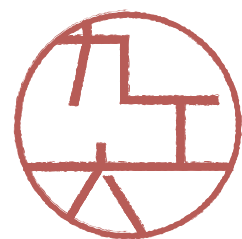
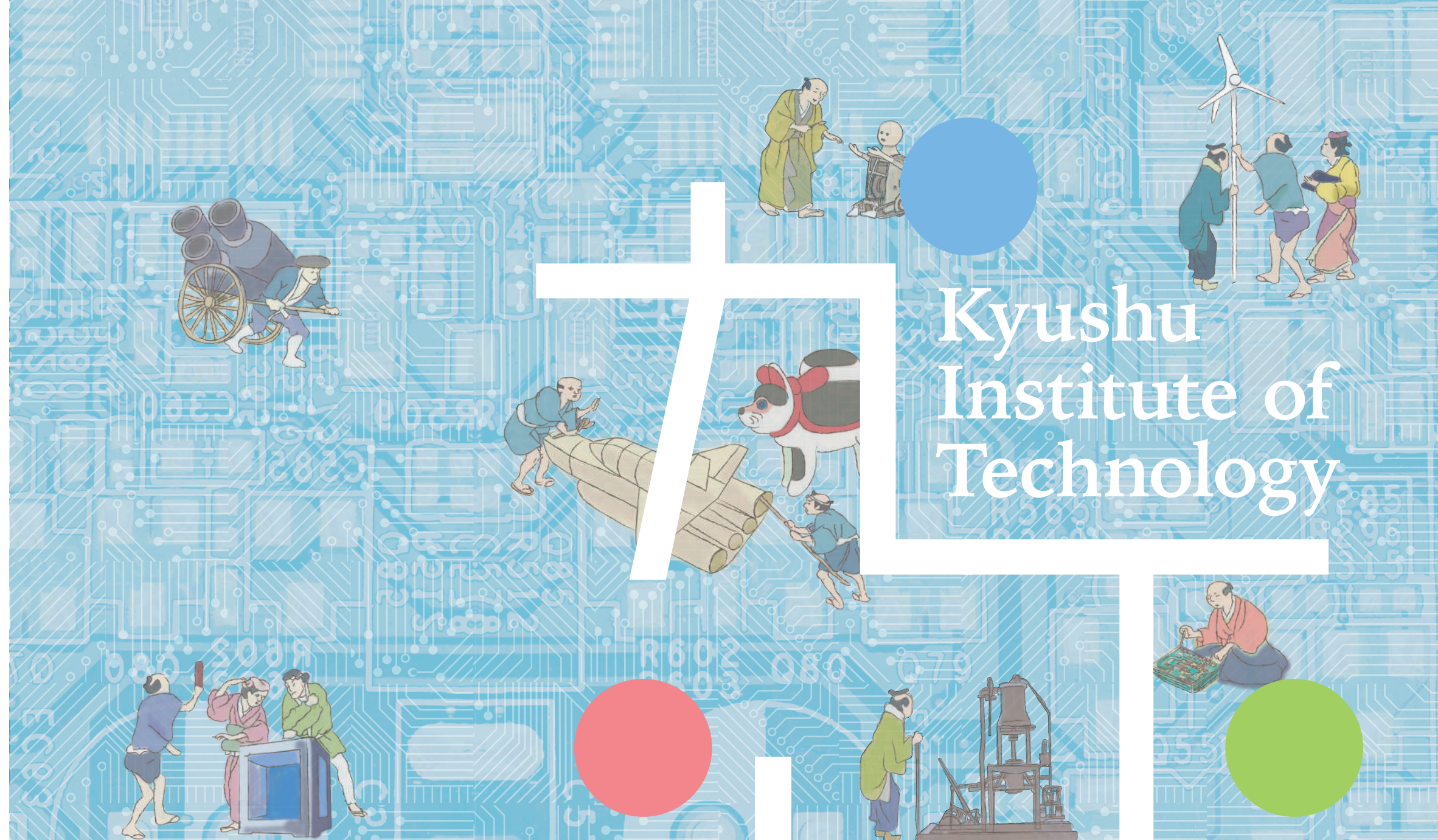
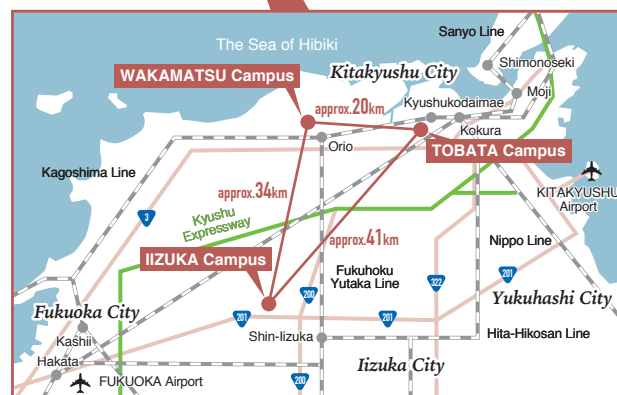


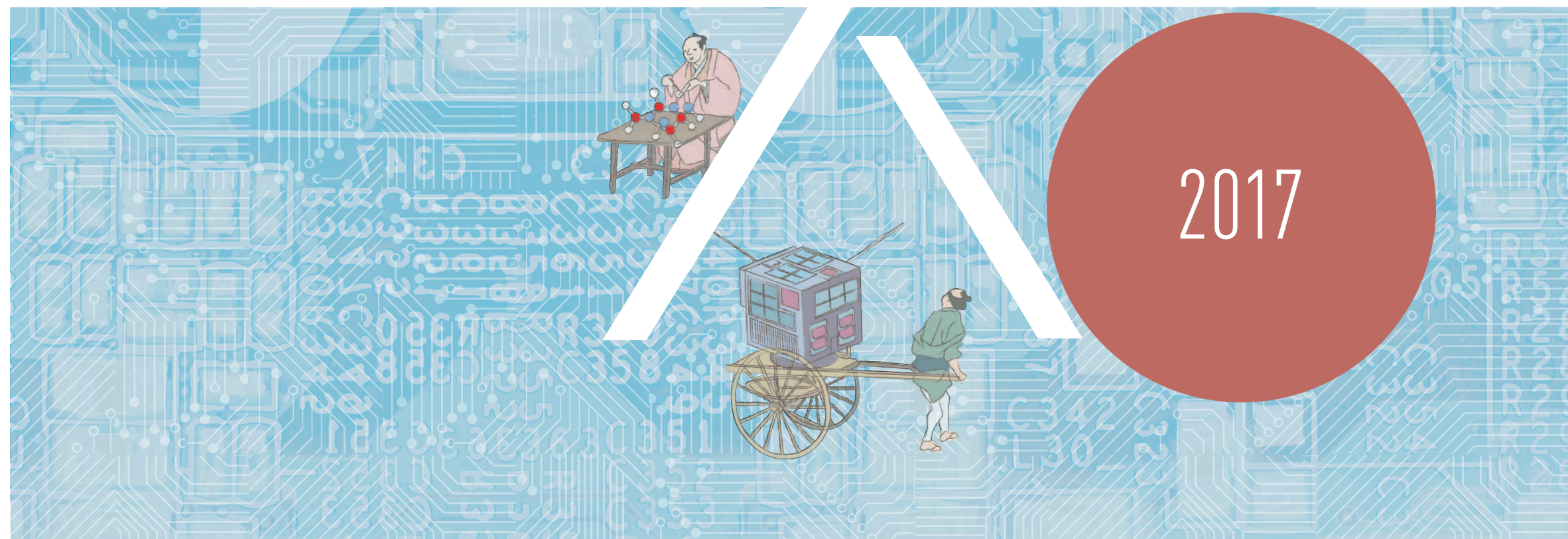
Kyushu Institute of Technology

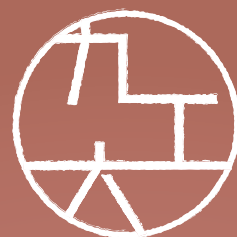


2017



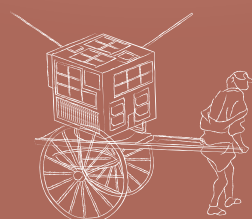
Kyushu Institute of Technology
 1-1 Sensui-cho, Tobata-ku, Kitakyushu, 804-8550 Japan
<http://www.kyutech.ac.jp/>
 International Affairs Division
 Phone : +81-93-884-3063 Fax : +81-93-884-3059
 E-mail : kok-kouryu@jimu.kyutech.ac.jp





History

- 1907 Meiji College of Technology was founded as a private institution
- 1909 Meiji College of Technology started
- 1921 Meiji College of Technology became a 4-year course national institution
- 1949 Meiji College of Technology became Kyushu Institute of Technology
- 1965 Graduate School of Computer and Systems Engineering was established
- 1986 Faculty of Computer Science and Systems Engineering was established
- 1988 A doctoral program was launched in Graduate School of Engineering
- 1991 Graduate School of Computer Science and Systems Engineering was established
- 1993 A doctoral program was launched in Graduate School of Computer Science and Systems Engineering
- 2000 Graduate School of Life Science and Systems Engineering was established
- 2004 Kyushu Institute of Technology was incorporated as a National University Corporation
- 2009 The school's 100th anniversary
- 2013 MSSC (Research and Education Facilities in Malaysia) was established



Message from the President



Contributing to Future Society
by Developing Talented Engineers
and Creating Knowledge

President
Kyushu Institute of Technology
Yuji Oie

Meiji College of Technology, a precursor to Kyushu Institute of Technology (Kyutech), was founded and funded by Mr. Keiichiro Yasukawa, a noted businessman of the time. In the more than 100 years since its inauguration, Kyutech has produced over 60,000 talented engineers by practicing its founding principle of "instilling a deep knowledge of science and engineering in high caliber students." The university has contributed to knowledge creation that will lead to academic progress, enhanced competitiveness in industry and regional development by making the most of its education and research capabilities.

Progress in science and technology in recent years is remarkable, filled with discoveries and inventions leading to the creation of innumerable technologies. These achievements have spread through society and become part of people's lives at an accelerating pace. For example, the Internet used to be just an experimental low-speed communication lines in 1969 and now became the network which connects people all over the world. This is one way that science and technology are closely linked with people's lives, and the importance of its role is increasing.

In this context, Kyutech has been producing the engineers who provide solutions to the complicated challenges in our diverse society. Kyutech focuses on the education of knowledge and skills, but also notices the essential qualities for global engineers: acceptance of diverse cultures, communication skills, self-learning skills, problem finding and solution skills, and engineering design skills. To cultivate these qualities, Kyutech offers a variety of study programs and the best learning environment.

In addition, we believe university is a place for knowledge creation which unlocks the future. As knowledge creation, research activities have two aspects of value; one is for the development of academic studies and the other is for the development of society. Kyutech has established 11 strategic research centers for the study of environment, energy, space, LSI, networks, robots and more in order to ensure a diverse array of research activities, and to actively promote industrial-academia collaborations.

Kyutech always seeks opportunities for information exchange, dialogue and collaboration with the public to introduce our various education and research activities, aiming at building up relationships and networks and to enhance the quality of education and research, and realizing a campus which encourages people to join in our knowledge creation.

Kyutech at a Glance



3

campuses

Tobata campus
Izuka campus
Wakamatsu campus



5,723

The number of students

4,170 undergraduate students

1,271 graduate students
(Master's program)

282 graduate students
(Doctoral program)



422

Faculty members

202

Administrative staff



www

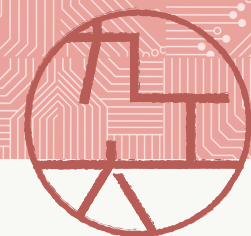


60%

of undergraduate students
go to graduate school



As of May 2016



Schools and Research Institutions

Undergraduate School

School of Engineering

- Department of Mechanical and Control Engineering
- Department of Civil and Architectural Engineering
- Department of Electrical and Electronic Engineering
- Department of Applied Chemistry
- Department of Materials Science and Engineering
- Department of Integrated System Engineering

School of Computer Science and Systems Engineering

- Department of Artificial Intelligence
- Department of Computer Science and Electronics
- Department of Systems Design and Informatics
- Department of Mechanical Information Science and Technology
- Department of Bioscience and Bioinformatics

Graduate School

Graduate School of Engineering

- Department of Mechanical and Control Engineering
- Department of Civil and Architectural Engineering
- Department of Electrical and Electronic Engineering
- Department of Materials Science
- Department of Applied Science for Integrated System Engineering
- Department of Engineering

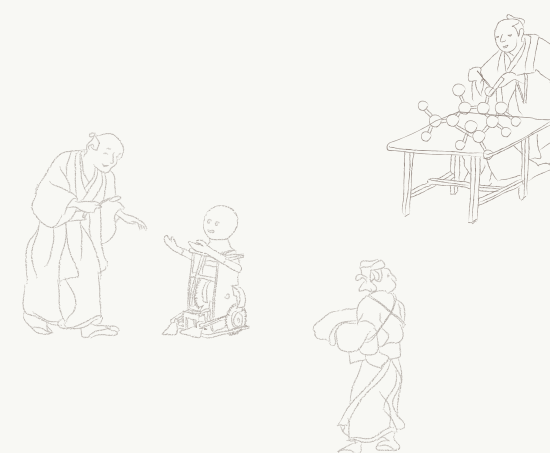
Graduate School of Computer Science and Systems Engineering

- Department of Advanced Informatics
- Department of Interdisciplinary Informatics
- Department of Creative Informatics
- Department of Computer Science and Systems Engineering



Graduate School of Life Science and Systems Engineering

- Department of Biological Functions Engineering
- Department of Human Intelligence Systems
- Department of Life Science and Systems Engineering



Institution for Education and Research

- Center for Student Health
- Information Science Center
- Center for Microelectronic Systems
- Center for Instrumental Analysis
- Learning & Teaching Center
- Laboratory of Spacecraft Environment Interaction Engineering
- Network Design Research Center
- Advanced Mold and Die Technology Center
- Research Center for Bio-microsensing Technology
- Science Education Center
- Eco-Town Collaborative R&D Center for the Environment and Recycling
- Research Center for Advanced Eco-fitting Technology
- Frontier Research Academy for Young Researchers
- Green Innovation Education and Research Center
- Biomedical Informatics R&D Center
- Next Generation Power Electronics Research Center
- Center for Socio-Robotic Synthesis
- Dependable Integrated Systems Research Center

International Course Kyutech opens more and more international courses

offered in English.

Graduate School of Engineering

Space Engineering International Course

Space Engineering International Course (SEIC) is designed for aspiring students and engineers with passion for space and satellites, aiming at nurturing both Japanese and international students into global engineers with cross-cultural competency and skills in space engineering. In SEIC you will engage in project-based learning in interdisciplinary, multicultural teams with access to top-notch research laboratories and satellite development and testing centers which is very unique to Kyutech. And you will gain the skills necessary to carry out the full cycle of satellite design, test, operation, systems engineering, and project management.

Graduate School of Engineering

International Material Course (Department of Materials Science)

Department of Materials Science is one of the graduate courses of Graduate School of Engineering and it's open for international students as International Material Course. The course covers the design and synthesis of new substances and materials that bring new functions, the analysis of material/substance structures and properties, and the elucidation of their function-generation mechanisms. It also works on the development of systems using value-added substances, and the development of production processes that respond to the needs of high-tech industries. For international students, all the lectures are provided in English.

Graduate School of Life Science and Systems Engineering

Global AAR Course

AAR is the abbreviation of Advanced Assistive Robotics, and Global AAR Course is focused on advanced robotics emphasizing the aspect of assistive technology. In this course, you will acquire knowledge and skills for design and implementation of intelligent systems that provides solutions to industry and medical welfare, in multidisciplinary subjects such as integrated circuits, control, sensing, nanosystems, computer systems, machine learning, cognitive/behavioral science, neuroscience, and brain-computer interface. You will learn and conduct research through collaborative work with Japanese students.

Graduate School of Computer Science and Systems Engineering

LSI and Applied Computing Course

LSI and Applied Computing Course is a newly opened international course in Graduate School of Computer Science and Systems Engineering. This course, which consists of two practical modules, covers the key technologies of system and LSI design including applied computing. The LSI design module provides knowledge of design for integrated circuits and dependable systems. The applied computing and system design module provides applications of computing methods with advanced systems and the methodology of system design.

Our Partners

Number of Agreements (as of March 2017)

● Number of Partner Institutions: 118 (31 countries and regions)

● Number of double degree partners: 10

- Université de Lorraine (France)
- Yangzhou University (China)
- Xidian University (China)
- National Taiwan University of Science and Technology (Taiwan)
- Institut Supérieur de Mécanique de Paris (France)
- Univertisi Putra Malaysia (Malaysia)
- Chang-won National University (Korea)
- École des Mines de Saint-Étienne (France)
- King Mongkut's University of Technology North Bangkok (Thailand)
- King Mongkut's University of Technology Thonburi (Thailand)



NORWAY
University College of Southeast Norway



POLAND
Faculty of Physics, Astronomy and Informatics,
The Nicholas Copernicus University
Adam Mickiewicz University



U.K.
Cranfield University
The University of Surrey



FRANCE
Université de Lorraine
International Space University
École des Mines de Saint-Étienne
Institut Supérieur de l'Aéronautique et de
l'Espace (ISAE)
Institut Supérieur de Mécanique de Paris
Graduate School ENSEIRB-MATMECA,
Bordeaux Institute of Technology
Université de Poitiers



GERMANY
Fakultät für Maschinenbau, Technische
Universität Braunschweig
Fraunhofer Institute for Intelligent Analysis
and Information Systems
Technische Universität Clausthal
Faculty of Computer Science, Electrical
Engineering, and Information Technology,
University of Stuttgart



ITALY
University of Salento
Faculty of Science and Technology,
Free University of Bolzano-Bozen
University of Turin



SPAIN
Universitat Jaume I



PORTUGAL
University of Porto



BELGIUM
Ghent University



CZECH
Faculty of Electrical Engineering and
Computer Science, Technical University of Ostrava
Faculty of Chemical Technology,
University of Chemistry and Technology Prague



SLOVAKIA
Faculty of Electrical Engineering and Informatics,
Technical University of Kosice



TURKEY
Faculty of Aeronautics and Astronautics,
Istanbul Technical University



BANGLADESH
BRAC University
Independent University
University of Rajshahi



INDIA
Indian Institute of Technology Delhi
SRM University
Indian Institute of Technology (BHU), Varanasi
Raman Research Institute
Indian Institute of Technology Indore
Indian Institute of Technology Kanpur
Dronacharya College of Engineering
Manipal University



THAILAND
Thammasat University
Sirindhorn International Institute of Technol-
ogy, Thammasat University
Faculty of Science, Mahidol University
Faculty of Science, Chulalongkorn University
King Mongkut's University of Technology
North Bangkok
Rajamangala University of Technology,
Phra-Nakhon
Faculty of Engineering, Kasetsart University
King Mongkut's University of Technology
Thonburi
King Mongkut's Institute of
Technology Ladkrabang
Faculty of Science, Khon Kaen University



VIET NAM
FPT University
Hanoi University of Technology
University of Science-HCMC
Center for Technology Development Assistance
and Services (CTDAS), Vietnam Academy of
Science and Technology
Institute of Biotechnology (IBT), Vietnamese
Academy of Science and Technology
Vietnam National Satellite Center



MALAYSIA
Universiti Putra Malaysia
Universiti Teknologi Malaysia
Universiti Kebangsaan Malaysia
Universiti Sains Malaysia
Universiti Teknologi MARA



TAIWAN
National Taiwan University of Science and
Technology
College of Science, National Cheng Kung
University
College of Electrical Engineering and Computer
Science, National Cheng Kung University
National Taipei University of Technology
School of Life Sciences, National Yang-Ming
University
College of Engineering, National Taiwan University
Teaching and Learning Center,
National Taiwan University
College of Electrical Engineering and
Computer Science, National Taiwan University



RUSSIA
Peter the Great Saint-Petersburg
Polytechnic University, Institute of Metallurgy,
Mechanical Engineering and Transport



CHINA
University of Science and Technology Beijing
Shandong University
East China Jiaotong University
Henan University of Science and Technology
Yangzhou University
East China Normal University
Xidian University
Xi'an Jiaotong University
Department of Thermal Engineering, Tsinghua
University
China Agricultural University
Northeastern University
Center for Brain Science Research, Fudan
University
Dalian University of Technology
School of Life Science, Beijing Institute of
Technology
School of Mechanical Engineering, Qingdao
Technological University
China University of Petroleum, Beijing
Hefei University of Technology
Division of Biomedical Engineering, the Hong
Kong University of Science and Technology
MONGOLIA
National University of Mongolia



KOREA
Chang-won National University
Korea National University of Transportation
Pusan National University
Brain Research Center, Pohang University of
Science & Technology
School of Engineering, Pohang University of
Science and Technology
Graduate School of Electrical Engineering and
Computer Science, Kyungpook National
University
Brain Science Research Center, Korea Ad-
vanced Institute of Science and Technology
School of Engineering, Sogang University
College of Engineering and Graduate School,
Dong-A University
Hanbat National University
Sookmyung Women's University
Korea Electronics Technology Institute
The CK-1 Center, Yeungnam University
School of Science and Engineering of Chemical
Materials, Kumoh National Institute of
Technology
Korea Maritime and Ocean University
PHILIPPINES
University of the Philippines Diliman
Ateneo de Manila University



INDONESIA
Institut Teknologi Bandung
Faculty of Industrial Technology, Universitas
Islam Indonesia
Faculty of Medicine,
University of Sumatera Utara



SINGAPORE
National Institute of Education (NIE)
of Nanyang Technological University



AUSTRALIA
University of Technology, Sydney
Australian National University



NEW ZEALAND
Faculty of Creative Industries and Business,
Unitec Institute of Technology
Knowledge Engineering & Discovery Research
Institute, Auckland University of Technology



U.S.A.
Clarkson University
The University of Texas at El Paso
California Polytechnic State University
The City College of New York



COSTA RICA
Instituto Tecnológico de Costa Rica



NIGERIA
The Federal University of Technology, Akure



GHANA
All Nations University College